

EYES WIDE OPEN

volunteering teams in high priority areas

26 March – 26 April 2023

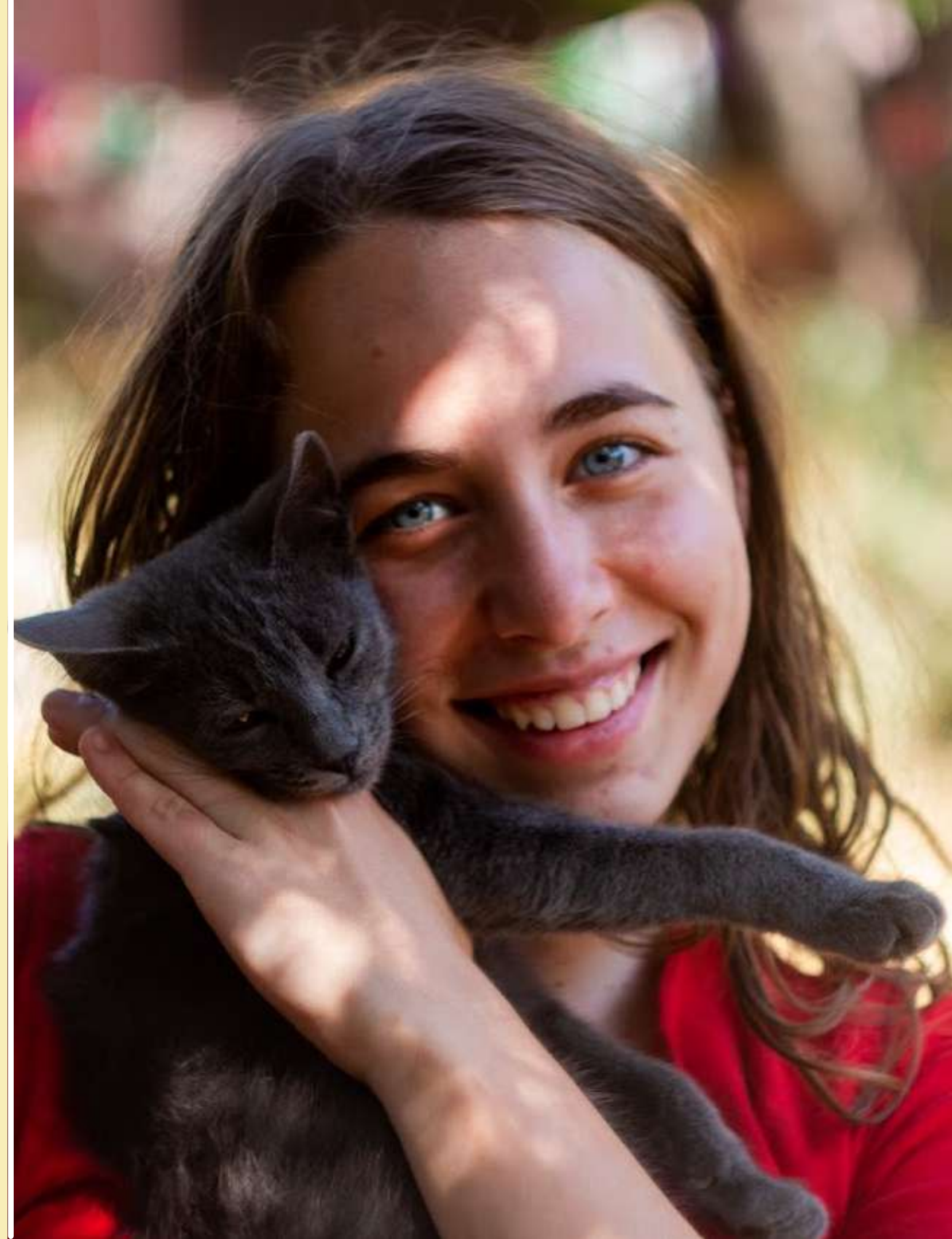
Argos, Greece



ΕΛΠΙΔΟΧΩΡΙ
Hopeland



Co-funded by
the European Union





BE A HOPELANDER



Live for 1 month in Hopeland, a 7-acre eco place in southern Greece focusing on sustainability and co-create your dream community with 15 more volunteers from around Europe.

Use your **hands**, your **mind**, your **creativity** and any other skills you might have into the **enhancement of the place**, creation of the **nurturing community** and into **outreaching locals** around Hopeland and beyond.



ABOUT HOPELAND

Hopeland educational **eco-community** is located in a rural remote area in the south part of Greece. The venture is built with lots of **love** and (mainly) with **natural materials** from volunteers, visitors and guests who have visited and stayed with us throughout the last 10 years.

Our **mission** is to provide a space where people **explore, create** and **learn** from each other and **nature**. A space in which our actions and interactions are based on our core values of **sustainability, mindfulness, synergy**, and of course.. **hope!**

Hopeland is offering various **experiential learning experiences** through the **Erasmus+** and **ESC** programs, mainly on the topics of personal growth, community and environment.

We are welcoming **young people, educators** and **local farmers** to join forces with us and together contribute towards our wider **vision** of a society with **deep community spirit** and **involvement** in personal, social and environmental growth.





ABOUT EYES WIDE OPEN

Eyes Wide Open Volunteering Teams is a dual project.



50% of the project is focusing on 3 pillars supporting Hopeland and its activities happening in place or together with the surrounding community.



50% of the project is focusing on creating a nurturing eco-community consisting of the volunteering teams' participants.



THE PILLARS OF THE PROJECT



- 01 Maintain & Upgrade
- 02 Outreach the local society
- 03 Leave your own mark and beyond



PILLAR 1: MAINTAIN & UPGRADE



Maintaining and upgrading is all about **hands-on actions** and activities focusing on the **improvement of the place**.

It can be **maintaining the gardens** and keeping in a good condition the infrastructure and facilities of the estate, **farming**, taking care of the **animals**, opening paths, making **wooden constructions** or **eco-building**, and other initiatives for improving the sustainability factors of the place.

We also plan to welcome our friends from **Liveloula**, a nearby eco-community, to join us for few days and **share their expertise** with gardening or/and some eco-building techniques.



PILLAR 2: OUTREACH THE LOCAL COMMUNITY

One of the parts of the project is **to reach out and connect with the local community and the local initiatives of the surrounding area.**

We aim to build **strong partnerships** and plan common activities in general and during this project.

We will plan these activities based on the **current needs**, it could be cleaning of the area, supporting local farmers, visiting local businesses etc.





PILLAR 3: LEAVE YOUR OWN MARK AND BEYOND



By joining this project you are already **considered a Hopelander**, the place also belongs to you. In order to support you with that, we encourage everyone alone or in groups **to leave their mark** in Hopeland.

It can be really anything as far as it is **in line with the vision** of Hopeland and you get the **green light** by Hopeland's supervisor.

It can be from a **piece of furniture made of used pallets**, a **piece of art from repurposed materials**, a **video about Hopeland**, a **future project**, a **tree that you planted**, a **strong partnership with another local or international initiative**, a **recipe book**, a **new NGO** etc. It can be something you come up with with or you can get inspired by our jar of ideas for future projects.



CREATING A NURTURING COMMUNITY

Living together for one month with a small number of people will give us a great chance to build a small society based on **care & common agreements**. On a weekly basis, there will be common **meetings** where we will be focusing on building a **healthy community** through various **reflection, movement, and nature-based activities**.

Besides, the community will be sharing also practical living tasks like daily **cooking, cleaning, shopping**, managing the **social media, watering plants, feeding animals** etc





FOR WHOM?

We are offering this opportunity to **15 participants** to ensure the intercultural dimension of the project. There are several requirements from the programme itself and a profile that we would like to focus on.

This project is also open to those who have completed 14 months of ESC/EVS volunteering programs.



Profile

- 18–30 years old (not older than 31 on the 25th of March 2023)
- Legal residents of one of the Erasmus+ programme countries with no visa needed to enter Greece
- Ready to live in a rural environment with basic conditions for 4 weeks
- Eager to be challenged into aligning together with people from different cultures and making together a nurturing and well-functioning community
- Enthusiastic with hands-on activities and practical tasks like farming, building, cooking, cleaning etc
- Eager to take initiatives and create opportunities for themselves and society
- People with a clear plan and vision regarding their participation in the project and beyond
- Extreme priority will be given to those that are facing or faced any kind of troubles in life

Special skills

- We are also looking for a couple of volunteers with media skills such as photography and filmmaking for documenting this whole experience for everyone but also support Hopeland activities, digital marketing and promotions.



THE LOCATION

Hopeland is situated **on a hill** near the **Malandreni village** and located 130km (approximately 2h) south of Athens. The nearest town is **Argos** which is 12km away where you can find anything from small shops to supermarkets, banks, post offices, and bus stations. Closer to Hopeland and 4km away you can find **small shops for shopping and coffee**. Shops there are limited and unfortunately, it's not in walking distance so smart and **sustainable planning of supplies is needed**.

Hopeland center/estate, is located in a **7.7-acre piece of land**, with old olive trees, almond and other trees, native herbs and it is surrounded by a forest and boasts, 5 oak trees protected by the local Forest Protection Service, out of which, one of them is estimated to be **400 years old** and it came to be the **landmark of Hopeland**.





THE FACILITIES

Facilities in Hopeland are basic but made with lots of love and work from previous Hopelanders



- Accommodation is happening in a big camping area that we call the **Village**, equipped with 5 **big teepee tents** with **3 beds** and 3 furniture for personal items in each tent. The Village is the **volunteers' area**. It has 2 outdoor toilets and 2 outdoor showers. Additionally, there are **2 compost toilets** around the estate.
- There is the **guest house**, a two-storey building built with the strawbale eco-building technique. The ground floor serves as a **common gathering area** and upstairs there are 16 beds for guests. It has 2 indoor toilets, an indoor shower and two more outdoor showers right outside of it.
- There is a **separate kitchen building** and a roofed dining area with all the necessary equipment for cooking and dining.
- The whole venture **runs in solar panels**, therefore, **electricity is limited** and on rainy days or days with strong consumption of electricity, we can run out of electric power. Due to that fact, there is **no possibility of using devices that consume a lot of energy** like hair dryers, hair straighteners etc and **washing of clothes can only be done in the traditional way**.
- Hopeland is a **vegetarian, no-drugs venture**. We believe that human beings can reach the utmost of their potential without the consumption of substances.
- There is **wifi** in specific area. For this, we recommend using your own 4G or mindfully use the wifi.



GET A GLIMPSE FROM PREVIOUS EDITIONS OF THE PROJECT _____

01 Greenovation Volunteering Teams [Chapter 1]



02 Greenovation Volunteering Teams [Chapter 2]





THE TIMELINE

Arrival

26 March 2023



Program starts

27 March 2023



Program ends

25 April 2023



Departure

26 April 2023



You have 7 extra days in total that you can use before or after the project to travel around Greece. If you wish to do so, bare in mind that you need to cover the costs for your accommodation & food. Late arrivals or early departures are not allowed.



PRACTICALS

Pocket money

- You will receive 5€/day for your living money

Food money

- You will receive a weekly budget for all the group in order to cook altogether

Reimbursement

- Your travel costs will be reimbursed according to the distance between your home and Hopeland.

Insurance

- Besides the European Health insurance card you are going to be offered a private insurance too

Youthpass

- You are entitled to receive a YouthPass certificate where you are expected to self-assess your own learning





INSTEAD OF CONCLUSION



What Sustainability means for us

Sustainability for us is the holistic idea to protect the **environment**, the **economy**, and the **people around us**. This means that yes, we look for greener solutions in our lives and the communities around us but also creating a balanced and harmonious connection with each other and the people around us.

Hopeland has done some steps towards being sustainable, the place is off the grid, most of the buildings are with eco-building techniques, it is a vegetarian place. However, we are fully aware that we are not 100% sustainable.

Our vision is to make **every day a step towards** this direction by **shifting mindset through experiential learning** and we are inviting you to also contribute to this action plan. We are also aware that flying people from around Europe to work on sustainability is unsustainable so we invite you to be conscious even before coming on your own travelling options and be ready to contribute with ideas and actions on how we can balance it during the programme.

We are looking forward to creating this **greener world together**.



ARE YOU THE NEXT HOPELANDER?

If what you've read so far resonates with you and you are ready to live and work for a month in Hopeland, then...

[Apply here](#)





REACH OUT TO US



ΕΛΠΙΔΟΧΩΡΙ
Hopeland



Ελπιδοχώρι / Hopeland



+306973064768



hello@hopeland.gr



hopeland.gr



/HopelandGreece



@hopelandgreece



Co-funded by
the European Union

The programme is funded by the European Education & Culture Executive Agency